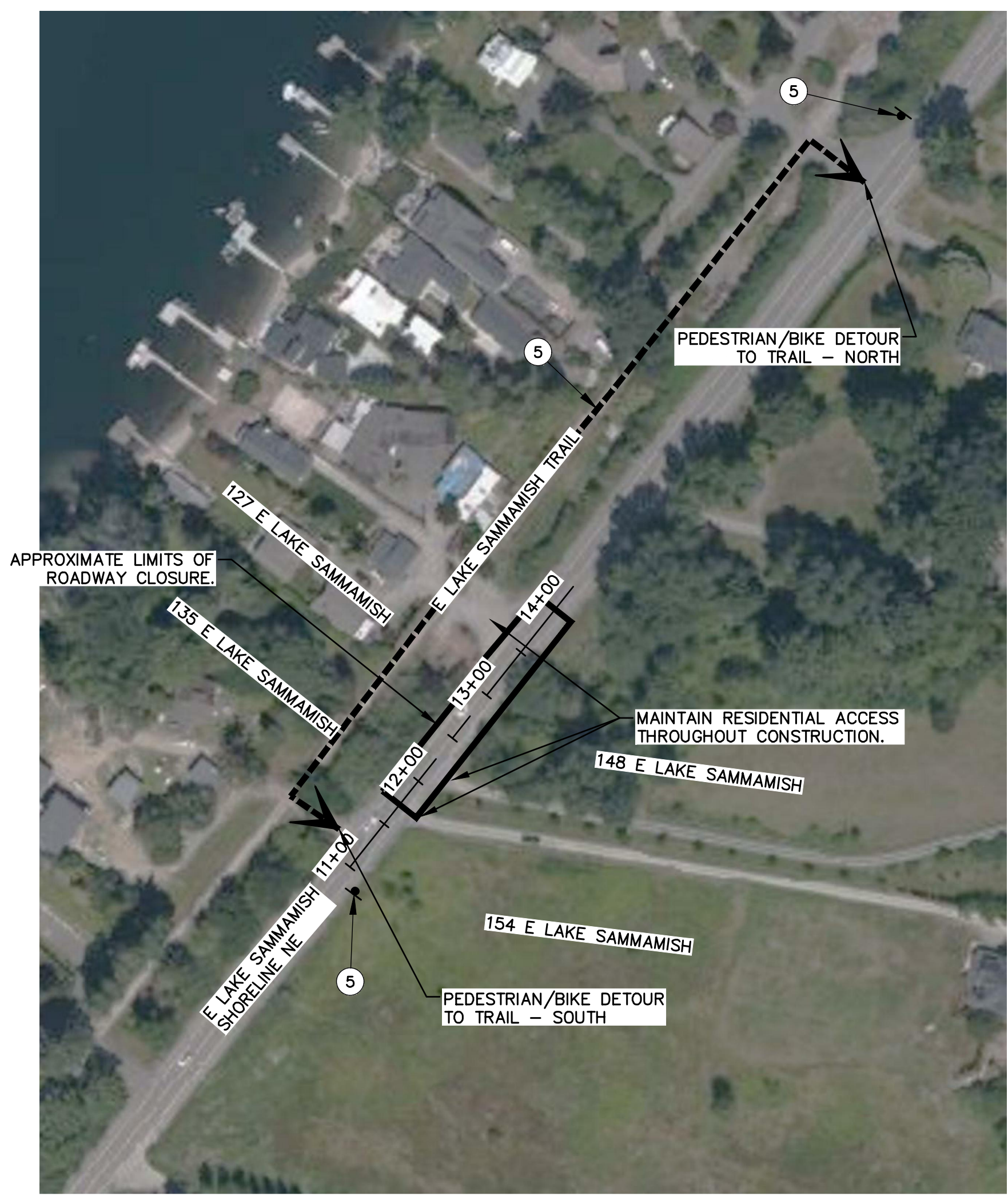
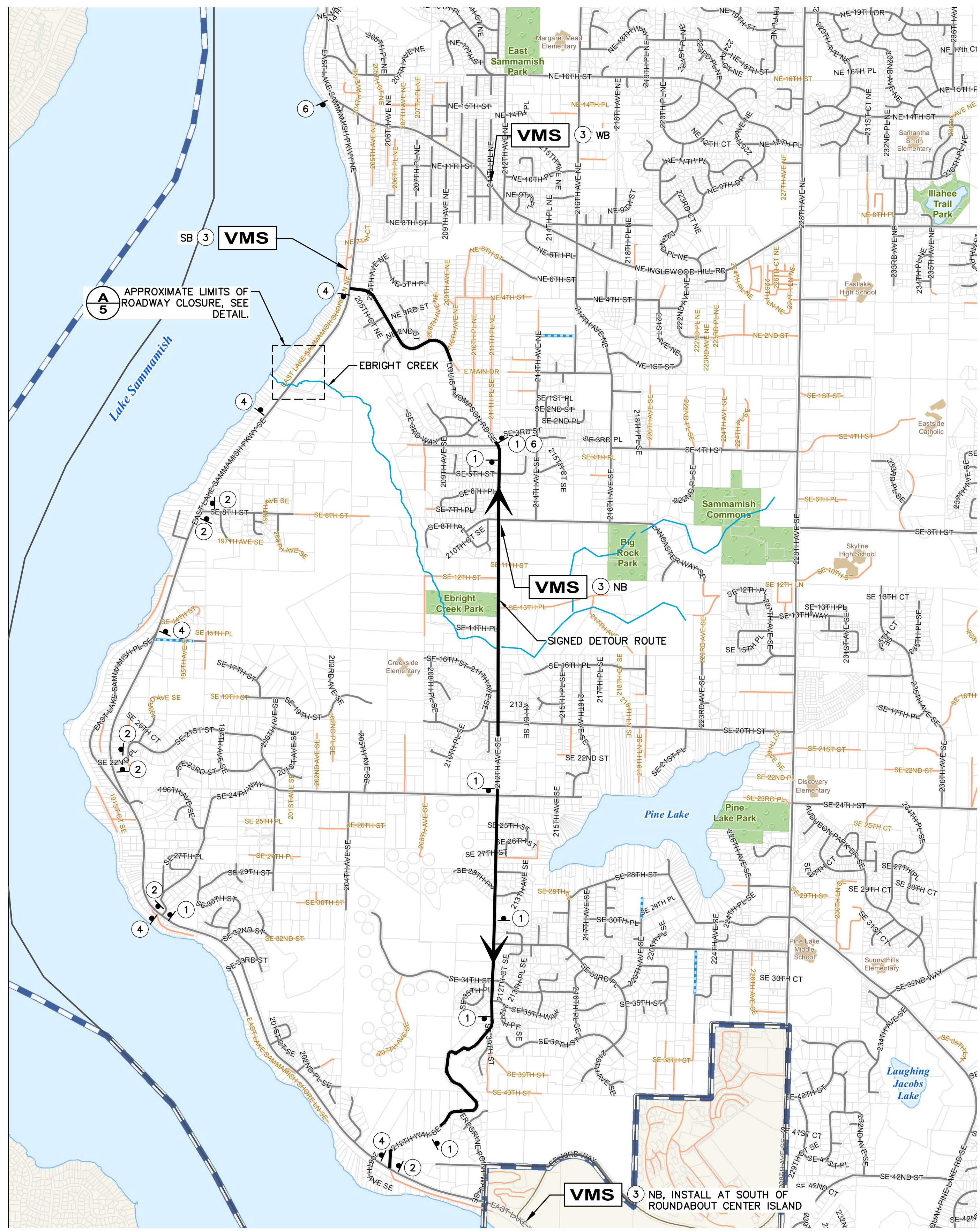


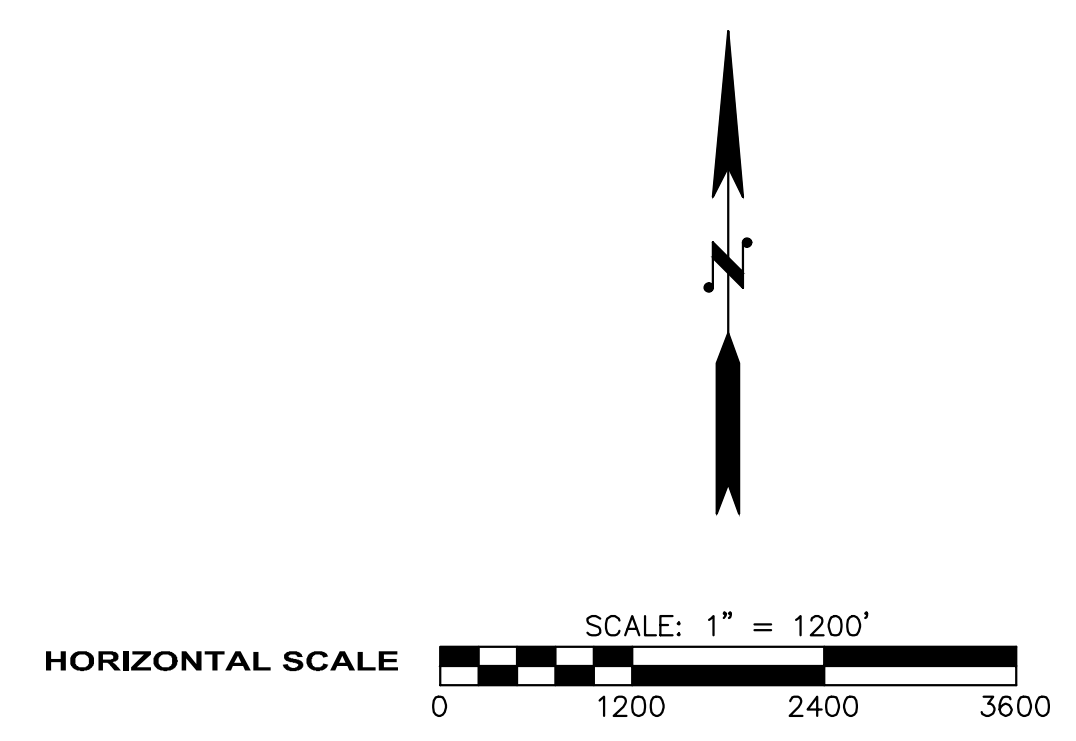
FILE NAME: C:\PWORKINGDIR\OSBORNCONSULTING-PW-BENTLEY.COM\OSBORNCONSULTING-PW-01\MIKE HECK\DM515578\VP_10-190038_DETLOUR.DWG
 PLOT TIME: 2/16/2021 11:49 AM
 USER NAME: MIKE HECK



A 5 DRIVEWAY ACCESS AND TRAIL PLAN
 SCALE: 1" = 100'



DETOUR PLAN



- GENERAL NOTES:**
- SIGN POSITIONS SHOWN ARE NOT TO SCALE.
 - SEE WASHINGTON STATE "SIGN FABRICATION MANUAL" FOR CODE REFERENCES.
 - VMS BOARD TO BE INSTALLED 2 WEEKS PRIOR TO START OF CONSTRUCTION WORK AT SITE AND MESSAGE CHANGED 2 WEEKS PRIOR TO ELSP ROAD CLOSURE.
 - EXISTING MARKINGS IN CONFLICT WITH THE PROPOSED CHANNELIZATION IN TRAFFIC PLAN SHALL BE REMOVED.
 - TRAFFIC CONTROL PLAN SHALL BE PROVIDED BY THE CONTRACTOR IN ACCORDANCE WITH SPECIFICATIONS SECTION 1-10.2(2).

- CONSTRUCTION NOTES:**
- INSTALL M4-9 "DETOUR" WITH D3-101 "E LAKE SAMMAMISH PKWY NE"
 - INSTALL R11-3 (MODIFIED) "E LAKE SAMMAMISH PKWY NE CLOSED NORTH OF SE 8TH ST (DATE) TO (DATE) ALTERNATE ROUTE ADVISED". INSTALL TWO WEEKS PRIOR TO CLOSURE AND REMOVE IMMEDIATELY AFTER ROAD IS OPEN TO TRAFFIC
 - PROVIDE VARIABLE MESSAGE SIGN (VMS) NORTH BOUND (NB) AND SOUTHBOUND (SB). CHANGE MESSAGE ON VMS AS DIRECTED BY THE CITY. LOCATION TO BE AS DIRECTED BY THE CITY
 - INSTALL R11-4 "ROAD CLOSED TO THRU TRAFFIC" WITH "LOCAL TRAFFIC ONLY" DURING CONSTRUCTION
 - PROVIDE ACCESSIBLE DETOUR FOR NON-MOTORIZED TRAVEL TO AND ALONG EAST LAKE SAMMAMISH TRAIL. INSTALL DETOUR SIGNS FOR PEDESTRIAN AND OTHER NON-MOTORIZED TRAVEL
 - INSTALL R11-3 (MODIFIED) "E LAKE SAMMAMISH PKWY CLOSED SOUTH OF LOUIS THOMPSON RD NE (DATE) TO (DATE) ALTERNATE ROUTE ADVISED. INSTALL TWO WEEKS PRIOR TO CLOSURE AND REMOVE IMMEDIATELY AFTER ROAD IS OPEN TO TRAFFIC

- LEGEND:**
- SIGNED DETOUR ROUTE
 - PEDESTRIAN/BIKE/ADA DETOUR
 - TYPE III BARRICADE
 - VARIABLE MESSAGE SIGN
 - TEMPORARY SIGN LOCATION
 - EBRIGHT CREEK



Know what's below.
 Call before you dig.



DESIGNED BY: KR
 DRAWN BY: MH
 CHECKED BY: TB

OSBORN CONSULTING INCORPORATED

Osborn Consulting, Inc.
 Bellevue | Seattle | Spokane
 www.osbornconsulting.com

NO.	DATE	REVISION	BY



EBRIGHT CREEK FISH PASSAGE
CITY OF SAMMAMISH
DETOUR PLAN

JOB# / DWG	DATE
10-190038	2/15/2021
SCALE	SHEET
H: AS SHOWN V:	5 of 25